

HBM Safety Suite

Powering the Future of Virtual Crash Testing

Transform your crash simulation workflow

As the automotive industry moves beyond physical crash test dummies, Human Body Models (HBMs) deliver unmatched biofidelity, flexibility, and efficiency—enabling more accurate insights into real-world occupant protection.

Backed by decades of scientific expertise and industry-leading crash simulation knowledge, Autoliv offers the HBM Safety Suite—a world-class solution designed to accelerate innovation and advance real-life traffic safety.

SAFER HBM

SAFER HBM is a globally recognized Human Body Model developed to advance real-world traffic safety. Originally founded through collaboration between Chalmers University of Technology, Autoliv, and Volvo Cars, SAFER HBM continues to evolve through rigorous research and innovation. All validation data will be openly available to ensure transparency and trust.

Delivered as an integrated component of the Autoliv HBM Safety Suite, SAFER HBM comes with full licensing and dedicated support from Autoliv. Ongoing development is driven by our trusted partner, Fraunhofer-Chalmers Research Center, ensuring continuous improvement and state-of-the-art performance. SAFER HBM is a globally recognized Human Body Model developed to advance real-world traffic safety.



Learn More

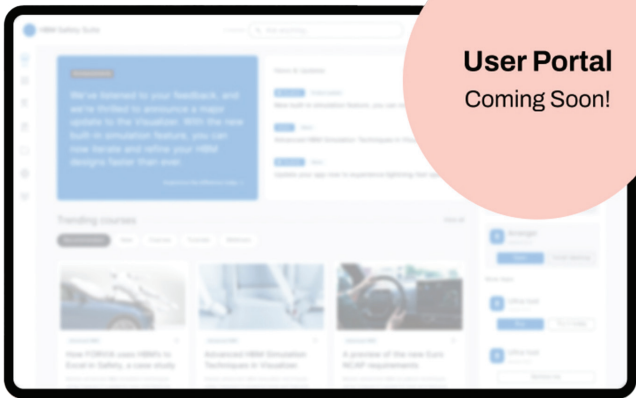
[autoliv.com](https://www.autoliv.com)

Continuous innovation

Autoliv HBM Safety Suite is at the start of an exciting journey. Each step forward will bring enhanced capabilities—introducing advanced tools and streamlined workflows. We are committed to continuous innovation, delivering smarter, more intuitive solutions that strengthen safety and protect lives.

User Portal

The upcoming User Portal will offer a single entry point to tools, learning and collaboration around Human Body Models.



User Portal
Coming Soon!



SAFER HBM

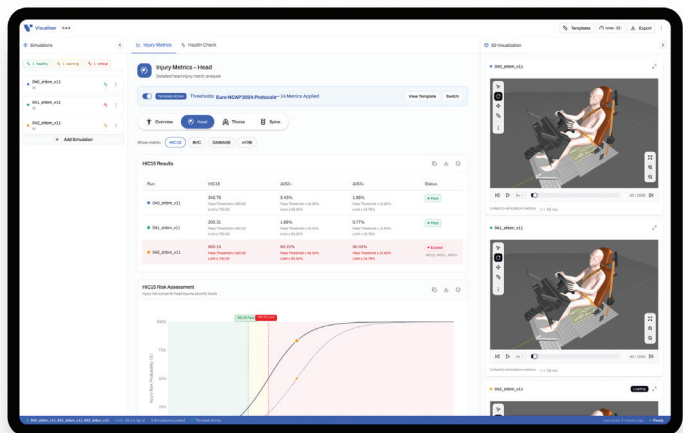
Continuously improved, SAFER HBM is a seamlessly integrated part of Autoliv HBM Safety Suite.

Pre-Processor (Arranger)

The upcoming Pre-Processor will bring confidence and speed to every HBM simulation set-up.



Pre-Processor
Coming Soon!



Post-Processor (Visualiser)

Continuously evolving, our post-processor will turn complex crash data into clear, actionable insights.



Learn More

[autoliv.com](https://www.autoliv.com)